



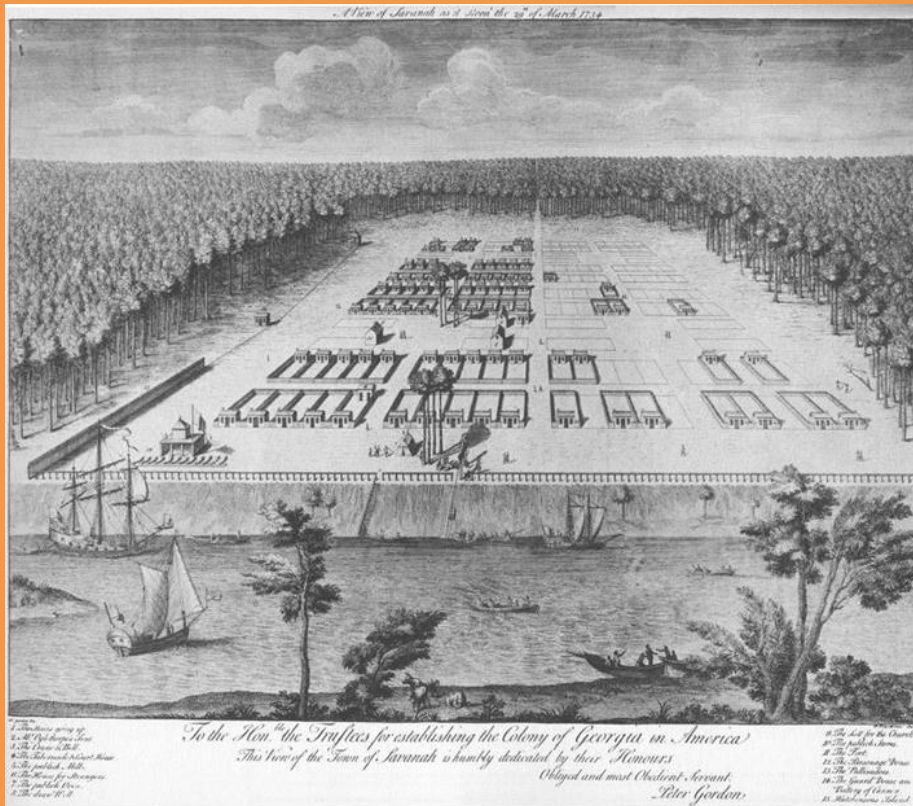
Healthy Savannah

Connect • Inspire • Grow

www.healthysavannah.org



Healthy Savannah
Connect • Inspire • Grow

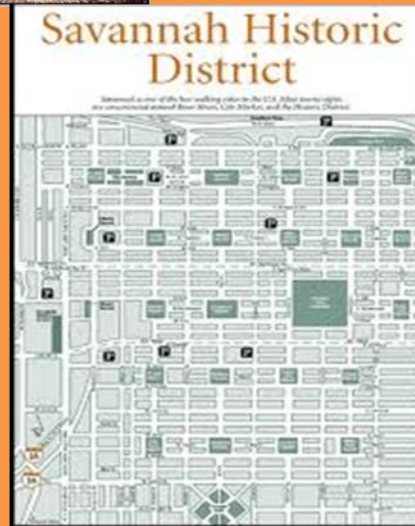


Georgia's First City!

Est. 1733



Savannah's First City Planner





What **Makes** Us Healthy



What We **Spend** On Being Healthy



Data courtesy of the Boston Foundation and the New England Healthcare Institute

January 1, 2011



breathesasy
SAVANNAH



www.healthysavannah.org



Healthy
Savannah
Connect • Inspire • Grow

Chatham County Inactivity Cost Calculator



Currently Chatham County has a 29% Obesity Rate:

Physical inactivity is costing our community \$1,518 per person per year. This equates to over \$325 Million annually: - \$88M in Medical Costs; nearly \$1 million in Workers Comp and \$235 M in Lost Productivity

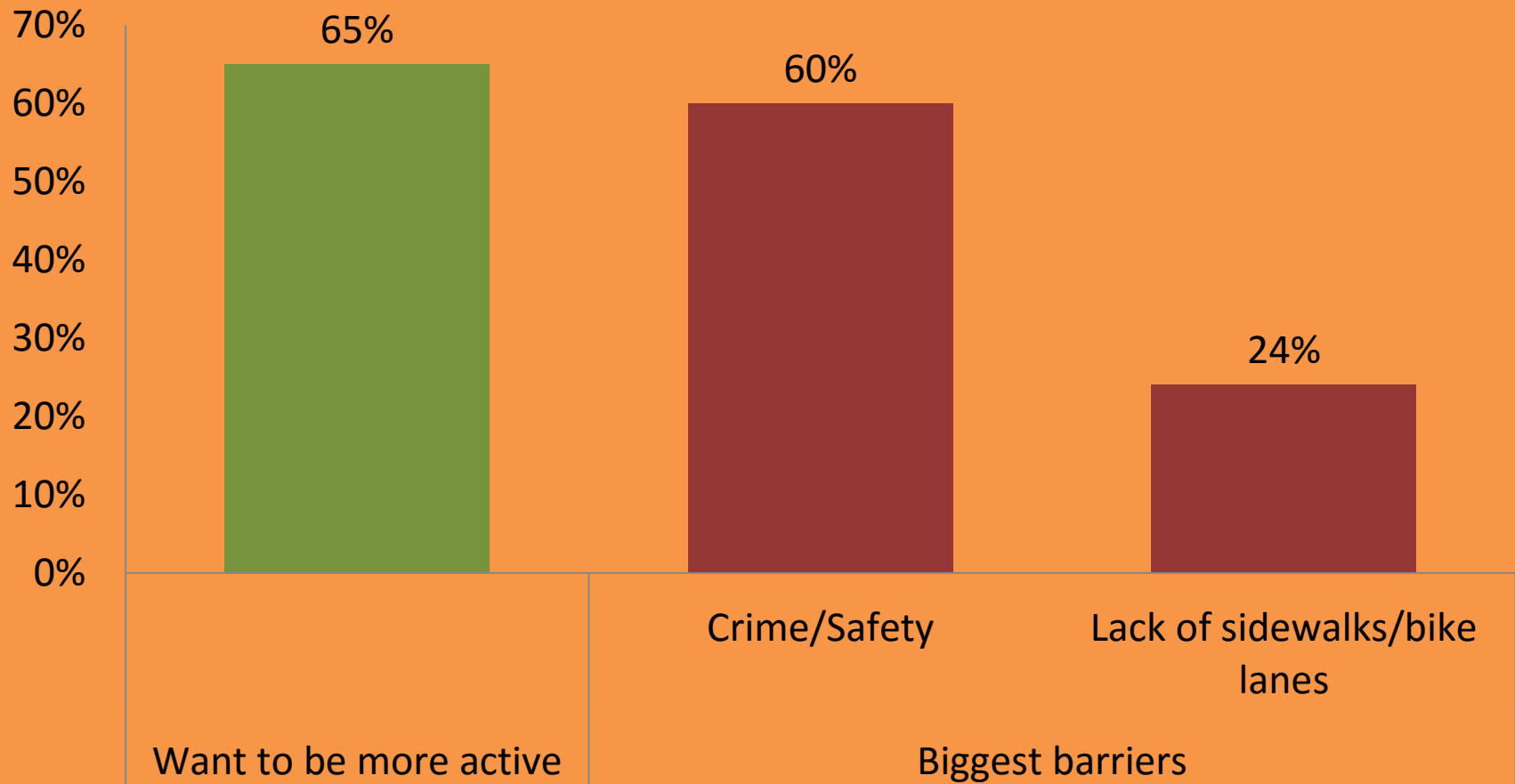


Data source: Transport Studio, LLC

www.healthysavannah.org



Activity of children/families



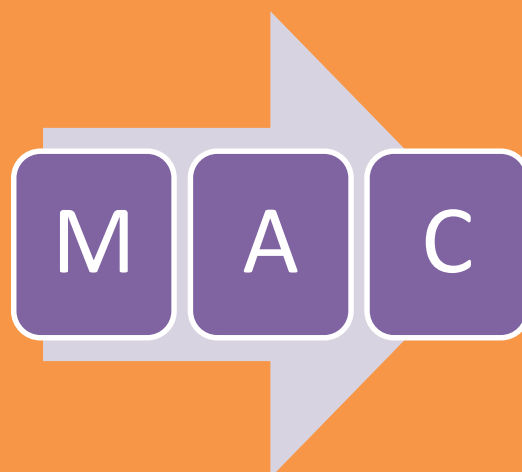
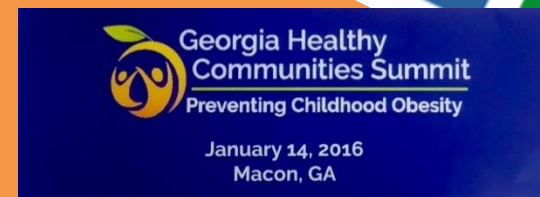
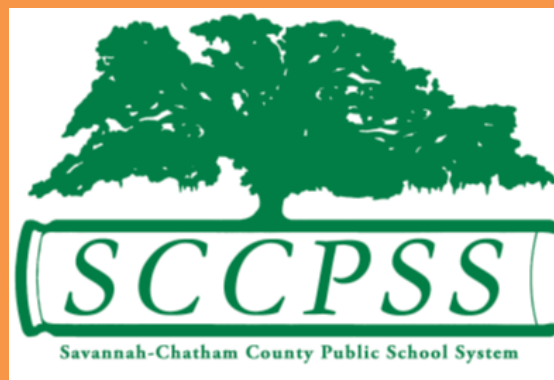
PLAN4Health

An American Planning and American Public Health Association Project

www.healthysavannah.org



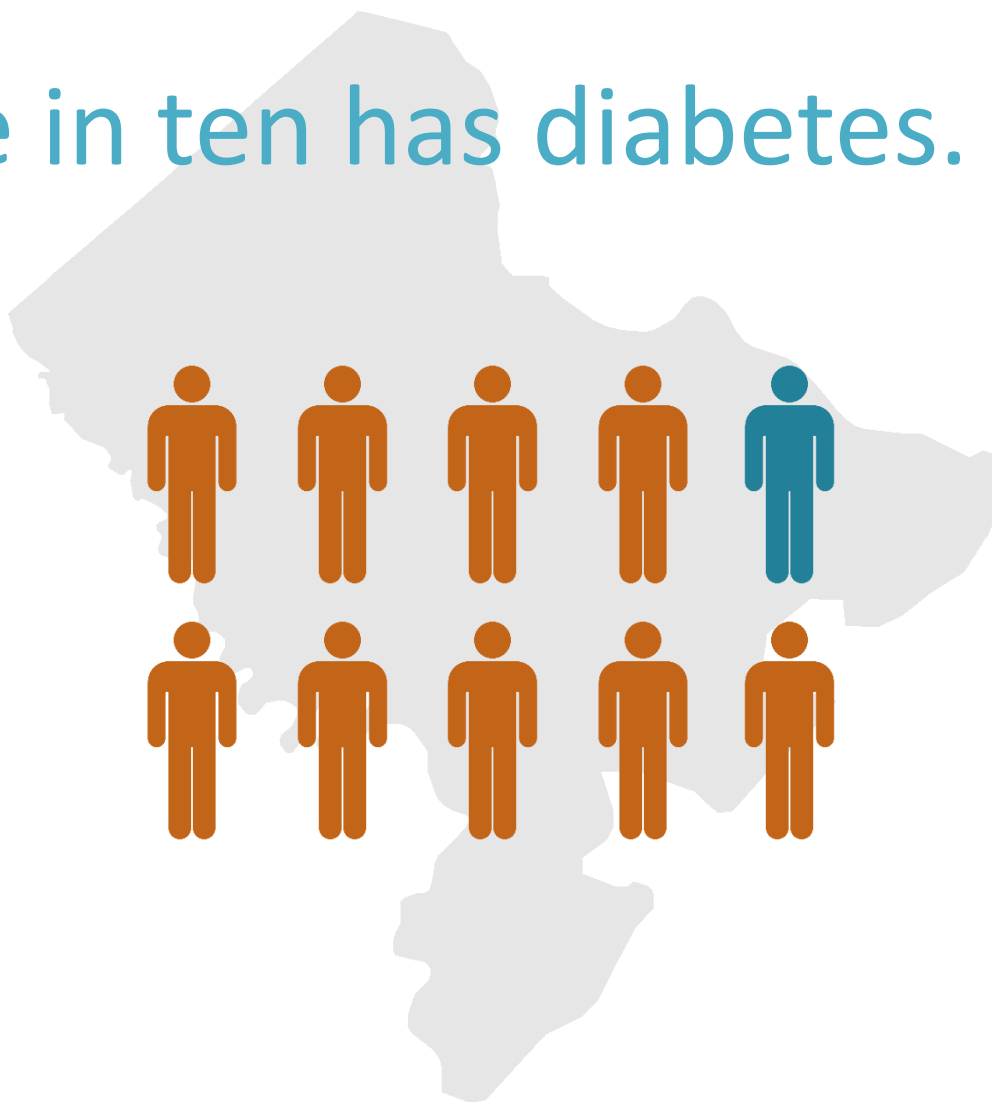
Healthy
Savannah
Connect • Inspire • Grow



www.healthysavannah.org



One in ten has diabetes.





Death Rate due to Diabetes more than three times higher
for African Americans than for white residents

Image source: Transport Studio, LLC

One child in three is
overweight or obese.





19%
residents

26%
children

DO NOT
have a reliable
source of
nutritious,
affordable
food.

Access to healthy food

Nearly 30,000 low income Savannah residents are over a mile from a grocer.

Data source: Transport Studio, LLC



Image source: IISC interactioninstitute.org

www.healthysavannah.org



**Healthy
Savannah**
Connect • Inspire • Grow

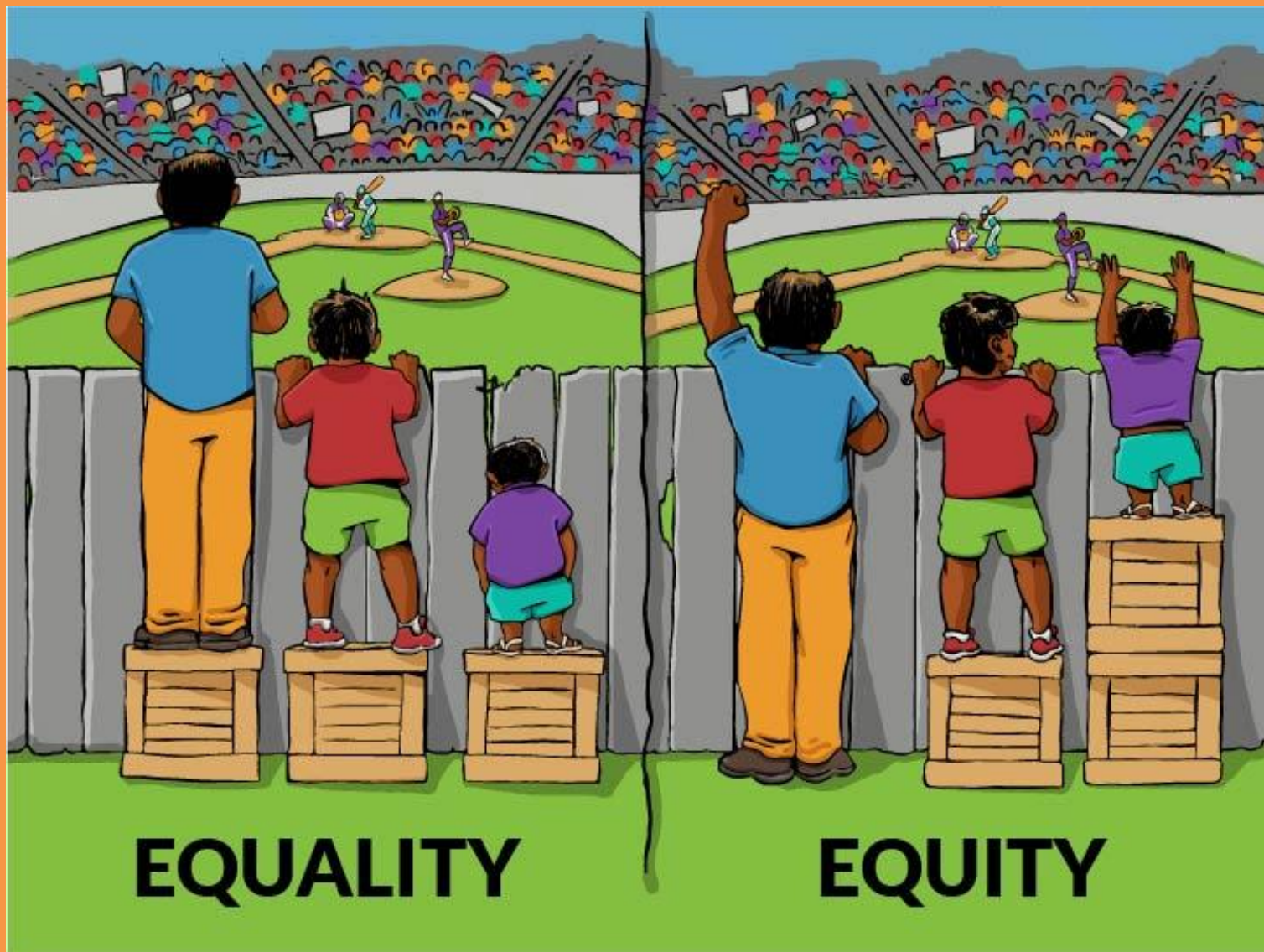


Image source: Interaction Institute for Social Change

www.healthysavannah.org



**Healthy
Savannah**
Connect • Inspire • Grow

Access to healthy choices

- Policy change to promote health
 - Complete Streets
 - Mixed use zones
 - Residential zones
 - Food retail
 - Food service in schools and hospitals
 - Healthy Meeting Guidelines



Image source: noun project

HEALTHIEST CITIES & COUNTIES CHALLENGE

aetna[®]
FOUNDATION

 **APHA**
AMERICAN PUBLIC HEALTH ASSOCIATION
For science. For action. For health.

NATIONAL
ASSOCIATION
of COUNTIES
NACo




www.healthysavannah.org



**Healthy
Savannah**
Connect • Inspire • Grow

INVEST HEALTH



ONGOING CALL TO ACTION: PLANNING & CREATING A CULTURE OF HEALTH

www.healthysavannah.org



Healthy
Savannah
Connect • Inspire • Grow

Thank you

lizann@me.com

www.healthysavannah.org



Healthy
Savannah
Connect • Inspire • Grow